

MNTRECC NEWS

September 2022 Edition 22

MISSION STATEMENT

MNTRECC provides statewide leadership by creating partnerships, resources and supports that serve to connect and strengthen early care and education for American Indian children and their families within the State of Minnesota.

VISION STATEMENT

Healthy, Thriving American Indian Children and Families.



*Minnesota Tribal Resources for
Early Childhood Care*

MNTRECC PROGRAM MANAGER – PATTI TURNEY

Patti's Hi-Lites:

Greetings Child Care Providers and Stakeholders, Welcome to Fall, it seems as though summer just started, and it was over. I didn't get any summer trips in but this fall I will be taking a vacation to San Francisco with my other 3 sisters. I am looking forward to this trip 😊

We had our MNTRECC Planning Team meeting in July, hosted by Red Lake Child Care Services. Our next meeting is set for October 13 & 14, 2022. Fond du Lac Social Services will be hosting this meeting. I have been busy getting all of the details set for our agenda. It is always so nice when we can get together and catch up with everything that is happening in our tribal communities. Our meeting minutes are usually posted on our website www.mntrecc.com if you are interested in reading what we are all up to.

Part of our contracted work is to address identified needs and barriers the tribal childcare providers experience in our tribal communities. If you could be so kind and click on this survey monkey link <https://www.surveymonkey.com/r/3D895X8> to provide some feedback to help us make sure we are supporting you as an Early Childhood provider we would appreciate this. Once we get the results back we (MNTRECC) will address these needs and barriers by adding this work to our strategic plan.

Here are couple new websites to visit if you know of anyone who wants to open a child care or wanted to start work in the Early Childhood Field 😊

<https://www.childcareawarewayfinder.org/> or empowertoeducate@childcareawaremn.org or if you have not joined Parent Aware you can visit www.ParentAware.org or give them a call at 888.291.9811 to find out the wonderful benefits of becoming a Parent Aware Rated Program.

Enjoy this beautiful Fall weather and the beauty it brings 😊

Butternut Squash Soup • 2 large butternut squash (remove skins and seeds) cut into 2-inch chunks • 1 tsp salt • 2 TBS maple sugar • 1 cup of vegetable broth • Pumpkin seeds roasted • Chives Place squash in a large saucepan and cover and cover with water and vegetable broth. Cook until fork tender: drain and reserve liquid. Mash with potato masher leaving some of the squash in chunks. Slowly stir liquid back into squash and stir until mixed. Add the maple syrup and salt. Serve with roasted pumpkin seeds and chives sprinkled on top. Jennifer Bendickson

OUTREACH/CHILDCARE STARTUP AND RETENTION NAVIGATOR – MICHELE FREDRICKSON

Hello everyone! It's hard to believe it's almost Fall already. We did very little fishing this summer and wishing I could turn back time a little bit. There is never enough time in the day to get all the chores done AND have fun. I didn't make it out blueberry picking this year either. I think I need to clone myself to get everything done. Oh well, there is always next year.

We have been keeping very busy here in the office. A lot of things are happening within our program. Currently, we are getting the newsletter created, copied and distributed. Facebook and Website posts are coming along. Technology continues to be a struggle, but we have learned to be creative to get done what needs to get done. The Tribal Licensed Provider list is kept current with contact with tribal licensors and myself. I do have an email group list with all tribal licensed providers. If your email changes, please let me know. We can send information out a lot faster with this list. I know there are a few providers on the path to licensing. Currently we are at 38 total tribal licensed providers, 21 Family Child Care and 17 Center Child Care. The MNTRECC eligible providers can change by the month. To be MNTRECC eligible, the provider must fit into one of the following categories:

- Are an enrolled member of a federally recognized tribe **or**
- Are a first or second generation descendent of an enrolled member **or**
- Are licensed or funded by a Tribal Government **or**
- 50% of children in care are of American Indian descent

MNTRECC no longer administers regional grants although we are working with the Districts to verify eligibility if the provider applies through their District.

Wayfinder training has slowed some, we meet a few times a month now. I will be concentrating on the marketing piece of recruiting potential childcare providers through ads in newspapers, social media, website, etc. If you know of someone who is considering becoming a childcare provider, please send them my way. I can be reached at 218-335-8390 (work phone) or email at michele.fredrickson@llojibwe.net. The Wayfinder website is <https://www.childcareawarewayfinder.org/>.

Next Month, October, we will be having our Planning Team Meeting on the 13th and 14th in Fond du Lac. It will be two full days of sharing program information. The Metro Work Group will meet the following Friday the 21st @ Playworks LINK Event Center in Prior Lake. We have a *Native American Parenting Program* training session planned. I am looking forward to seeing everyone. I sat in on a couple of Licensors Meetings in September for the Northeast District and Northwest District. It was nice to put some faces and names together and see what the groups are doing with recruitment and retention efforts.

I hope everyone has a great fall season. I am definitely looking forward to football, the leaves changing, homemade soup, some hunting if the weather allows. I am a fair-weather hunter these days. I don't care for the cold much. Take care and don't forget to send potential childcare providers my way. Michele ☺

These are just some of the concept's kids can learn about during a fall theme:

- apples
- trees
- pumpkins
- leaves
- life cycles of an apple, pumpkin, or tree
- senses
- seasonal changes



Metro Work Group Mission Statement
To strengthen the cultural heritage of American Indian children residing in the metro area by promoting and supporting early childhood services that foster skills for school and life success

Outdoor Fall Activities

- Go apple picking
- Get lost in a corn maze
- Take a leaf-peeping road trip
- Play a game of touch football
- Go for a hike
- Collect colorful fall leaves
- Rent a cabin in the woods
- Plant bulbs in your garden for next spring



Chelssi Klein, Workforce Development Advising Coordinator at the Child Care Aware MN Coordinating Office, will be sharing information about the new Empower to Educate program at the Tell Talk on November 17th at 1:00 PM. Empower to Educate helps current and aspiring early childhood educators advance and sustain their career goals in child care. Hope to see you there!

More information about Empower to Educate can be found at the link below:

<https://www.childcareawaremn.org/providers/professional-development/empower-to-educate/>

If you would like to receive future registration information about TELL Talks, please send an email to telltalks@childcareawaremn.org.

PROFESSIONAL DEVELOPMENT – JANEL O'BRIEN

Happy Fall ya'll!

My favorite time of year is fast approaching. Although I enjoy summer, I am excited for sweater weather and I hope everyone had a great summer!

Congratulations to the two winners, **Jennifer Syverson and Christine Lundemo**, who each won a \$50 Walmart Gift Card from their participation in the Spring training needs survey. Jennifer is a Family Child Care Provider in the White Earth tribal community and Christine is with Head Start/Early Head Start in the Bois Forte tribal community.

The REETAIN Bonus will soon become available for **Family Child Care** providers. REETAIN Bonuses help supplement income for early childhood educators as they work to establish a career in the field. The fall application period runs from October – November 30th each year. Applicants must have a current Develop Membership with accurate and verified employment. Updating this information or applying for a membership takes time, so it's important to start now. Please contact REETAIN@childcareawaremn.org if you have any questions.

Registration is now open for the October MNCDA Learning Community on Eager-to-Learn. This learning community provides training that meets the Council for Professional Recognition requirements and is often the first step into a career educating young children. For registration or additional questions, please contact Christy Berg, Workforce Advising Coordinator, at ChristyB@childcareawaremn.org

MNTRECC will be hosting Adult Learning Modules 1 & 2 training in Cloquet on December 1st & 2nd. These classes help trainers meet the 12 hours of training about adult learning required for trainer approval in Minnesota. Completion of both modules is required. If you are interested in attending or having any questions, please contact myself or Diane Smith – contact information is listed on last page.

Resources:

<https://www.mncpd.org/wp-content/uploads/Individual-Membership-Companion-Guide-1.pdf>
Updated Individual Membership Companion Guide!

<https://www.childcareawaremn.org/providers/grants-and-scholarships/reetain-bonuses/>
REETAIN Bonuses

<https://www.childcareawaremn.org/providers/grants-and-scholarships/teach-scholarships/>
T.E.A.C.H. Scholarships

<https://ceed.umn.edu/tarss-trainings-2/>
TARSS trainings – CEED

<https://www.parentaware.org>
Parent Aware



Congratulations to newly rated programs that earned their Parent Aware Rating after completing the January 2022 Cohort!

C's Daycare – Red Lake

Maajiigin – Cass Lake

Miranda Anderson – Waubun

Naytahwaush Child Care Learning Center – Mahnommen

White Earth Infant and Toddler Center –

Sink or Float

Enjoy this fall-themed sink or float science experiment with your children. Sensory play is a great way to learn and although a little messy, it's a fun activity! Gather some fall items to experiment with – red and green apples, mini pumpkins, acorns, pine cones, leaves and anything else you see around. You can also do this activity for the upcoming holidays and winter season!



Rock Painting

Leaf printing on rocks is a fun and easy fall craft that kids will love. Start with a fun nature walk, collect rocks (large enough to fit a leaf on), and leaves that are a variety of shapes and sizes. Make sure your rocks are clean and dry before painting and once dry, it's time for the leaf printing. Paint the leaves on the back to create more detail when printed and press on your painted rock and gently lift off to reveal the beautiful, unique print! Seal your rocks with Mod Podge (matte finish), if you wish! Use finished product as fall décor, as center-piece on the table, or place in your favorite hiking trail!



CULTURE AND LANGUAGE – DIANA SMITH

The work continues building a pool of Native American Cultural Trainers across the state of Minnesota. Earlier this summer MNTRECC hosted a Native American Parenting Program Training of Trainers in Mille Lac. With 8 individuals attending, most had previous training experience or working in tribal communities. The two-day training was energetic and filled with sharing experiences and traditional values of the indigenous people. In this cohort we have 6 new Cultural Trainers, and 2 individuals are currently approved trainers in Develop.

We provide continued support through the trainer approval process, from register on develop as a member to helping trainers complete the Adult Learning Modules 1 and 2. We are currently working on hosting a two-day training on the Adult Learning Modules 1 & 2. This will be an in-person event, we are finalizing a few of the details and will be sending out a save the date soon. The Adult Learning modules are also available online through Eager to Learn, if this option works better for you, we offer a reimbursement on the registration cost. Trainer's will need to complete a vender form with LLBO and submit a copy of their learning recorder indicating completing the modules in order to be reimbursed.

The Native American Parenting Program trainings are happening around the state, details of those trainings are available in Develop. We are planning to offer a two-hour NAPP training to the next Metro Workgroup in October, and recruiting anyone interested in becoming a trainer in NAPP.

We have another NAPP TOT in the works, we plan to host this somewhere in the southern part of the state and will be reaching out to the Dakota Communities to see if they would be interested in collaborating on this project as well as recruit new cultural training in the southern part of the state.

Our next Culture and Language subcommittee will be virtual and scheduled for October 4th @ 10:00 am, I'm working on a few projects, the Ojibwe audio is finally starting to take shape and I will share that plan with the committee, along with consolidating the Dakota Language kits into one kit. We will be planning another Ojibwe & Dakota Language Training the Trainer's event.

I'm looking forward to getting back out there with the Language kits and NAPP curriculum and building up that momentum to get these resources out into the tribal communities. Until next time, take care, be safe and hope you find some time to enjoy this changing of seasons. *Diane*

Roast Butternut Squash & Wild Rice Salad

Prep time: 30 minutes

Cook time: 45 Minutes

Ingredients

Salad:

2 1/2 Cups water

1 1/2 Cups (Cooked) Wild Rice

5 Cups (about 1 medium) Butternut Squash (peeled, seeded and cut into 1-inch cubes)

1 1/2 Tablespoons extra Virgin olive oil

3/4 cup halves pecans

1 large apple, cut into 1/2-inch pieces

1/2 cup dried cranberries

1/4 cup finely chopped shallot or red onion

Dressing:

1/4 Cup extra virgin olive oil

2 tablespoons apple cider vinegar

1 tablespoon honey

1 teaspoon Dijon mustard

Salt & Freshly ground black pepper to taste

Prepare the Wild Rice: Cultivate Wild Rice, takes longer to cook about 45 minutes. Hand Harvest rice takes half the time, key is NOT over cooking your rice.

Clean your rice, place the water and rice in a medium saucepan and bring to a boil. Cover, and reduce heat to a low simmer, and cook until water is absorbed. Remove the pan from heat and let stand for 10 minutes with the lid still on. Fluff with a fork.

Meanwhile prepare the Butternut squash: Preheat the oven to 425 degrees F. Place the cubed butternut squash in a rimmed baking sheet and toss with the 1 1/2 tablespoons of olive oil. Roast in the preheated oven for 35 to 40 minutes, turning the squash halfway through. Roast until tender.

Toast the Pecans: Place the pecans on a small skillet over medium heat until fragrant. Watch closely as they can go from toasted to burnt quickly

Assemble the Salad: in a large bowl, combine the cooked rice roasted squash, toasted pecans, apple pieces, dried cranberries, and shallots or red onion.

Make the dressing: in a small bowl, whisk together all dressing ingredients. Pour the dressing over the salad and toss gently to combine. This can be served warm, at room temperature or chilled.

Credit: recipe girl

Tribal Spotlight Red Lake Nation Childcare

Philosophy: Every child has the right to reach their maximum level of development. We believe in creating a safe and rich environment in which children are encouraged to participate to learn, interact, and play with other children to stimulate their learning development. Parents and families are the first and most influential people in your child’s life. We will assist you by working positively with you for the best possible results and be positive role models to your child.

We offer the following Family Services:

- Subsidy (Child Care Development Fund)
- Subsidy (Child Care Assistance Program)
- Parent Aware Early Learning Scholarships
- The Red Lake Nation Child Development Center
- Ojibwemowin Resources via Oshkiimaajitahdah
-

We offer the following Child Care Provider Services:

- Recruitment and Retention through Start Up or Expansion Grants of childcare services
- Licensing & Monitoring RLN Child Care Provider’s Requirements
- Health & Safety Supplies/Equipment
- Reimbursement for Provider Training/Education of Owners & Staff
- Ojibwemowin Resources via Oshkiimaajitahdah
- Technical Assistance & Support

Mn.gov/childcare page updates

The [Child Care / State of Minnesota childcare \(mn.gov\)](https://mn.gov/childcare) site has been updated and expanded as of Monday, September 19, 2022. This widely used tool created during the COVID-19 pandemic will now feature information and resources related to child care and early education for providers, families, and communities. A team of subject matter experts from multiple state agencies worked together to compile, review and create this updated content. We ask that you share the following message with your networks as appropriate

Program Update Tool

Fall and the back-to-school season are underway making this the perfect time to remind programs to update their business information using the Program Update Tool. The Child Care Aware of Minnesota Program Update Tool is the fastest and easiest way to update child care business information and Parent Aware profiles. Programs can update their hours of operation, ages served, and rate information in just a few minutes.

The [Update Tool link and instructions](#) are available on the Update Tool page of the Parent Aware website.

REETAIN Bonus Application Opens Soon

REETAIN Bonus applications open to family child care educators on October 1! REETAIN Bonuses reward early childhood educators who have demonstrated a commitment to the field by continuing their education and professional development. The fall application round for family child care is open through November 30. Technical assistance will be available through November 20.

Please visit the [REETAIN Bonuses page](#) to learn more about eligibility and the application process.

“As a child, author Ronda Snow listened late into the night to the stories Ookomisan, her grandmother, told her, while moonlight lit the room and the plaintive call of an owl often sounded outside her bedroom window.

Her stories come from the ancestors who experienced a beautiful, wild and enchanting world surrounded by ancient forests, where little people still exist, and the trees still hold secrets that only those who listen can hear. Only then, we learn that we are all connected to each other, the creation, and the Creator.” – from [Birchbark Books](#)

This lovely picture book tells the story of the little people and their gift of maple syrup to the Anishinaabe people.

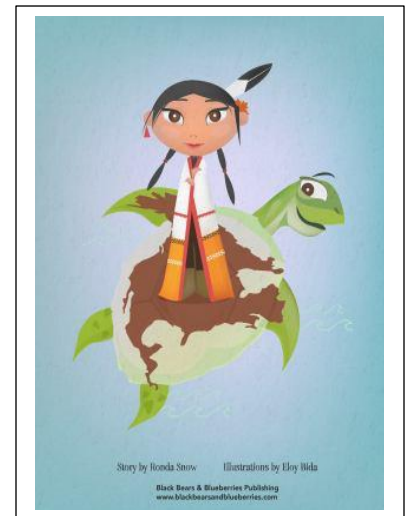
The Little People and the Water of Life can be found at the [Debra S Fish Early Childhood Resource Library](#) (a Minnesota public library) as well as your local library. If your library does not carry this title, you can make a request through [MNLink](#), Minnesota's statewide interlibrary loan service. All you need is your regular library card.

Questions? Contact Jennie at librarian@thinksmall.org or (651) 641-3544

Check out these Native booksellers to add to your personal collection:

[Birchbark Books](#): Native bookstore owned by author Louise Erdrich, member of the Turtle Mountain Band of Chippewa Indians

[Black Bears & Blueberries Publishing](#): a Native owned non-profit Company that publishes children's fiction and non-fiction paperback books and e-books, reading levels K-6, on Native topics serving a regional audience, including the Dakotas, Michigan, Minnesota, and Wisconsin.



<p>Patti Turney, Program Manager Patti.Turney@llojibwe.net 218-335-8381</p>	<p>Janel O'Brien, Professional Development Advisor Janel.Obrien@llojibwe.net 218-335-7210</p>
<p>Michele Fredrickson, Outreach/Childcare Startup & Retention Navigator Michele.Fredrickson@llojibwe.net 218-335-8390</p>	<p>Diane Smith, Culture & Language Coordinator Diana.Smith@llojibwe.net 218-335-8226</p>